

Gilles Deleuze, *Francis Bacon: The Logic of Sensation*

Supplementary Plates

The first French edition is in two volumes: volume one contains Deleuze's text, while volume two contains several reproductions from Bacon's paintings. The current French edition contains only seven color plates. Unfortunately the English edition has no imagery at all. To help remedy this, please find collected here the seven paintings reproduced in the current French edition, which correspond roughly to the paintings most referenced by Deleuze.

Deleuze used a numbering system to refer to Bacon's paintings. The English edition contains a list of paintings on pages 169-173. These numbers correspond to numbers that appear in brackets in the text. The seven paintings reproduced here correspond to the following numbered paintings from the English edition:

[3] *Painting*, 1946. Oil and tempera on canvas, each panel 198 x 132 cm. Museum of Modern Art, New York. [Plate 4 in the 2002 French edition.]

[35] *Triptych, Crucifixion*, 1965. Oil on canvas, each panel 198 x 147.5 cm. Staatsgalerie Moderner Kunst, Munich. [Plate 7 in the 2002 French edition.]

[53] *Triptych, Two Figures Lying on a Bed with Attendants*, 1968. Oil on canvas, each panel 198 x 147.5 cm. Private collection, New York. [Plate 5 in the 2002 French edition.]

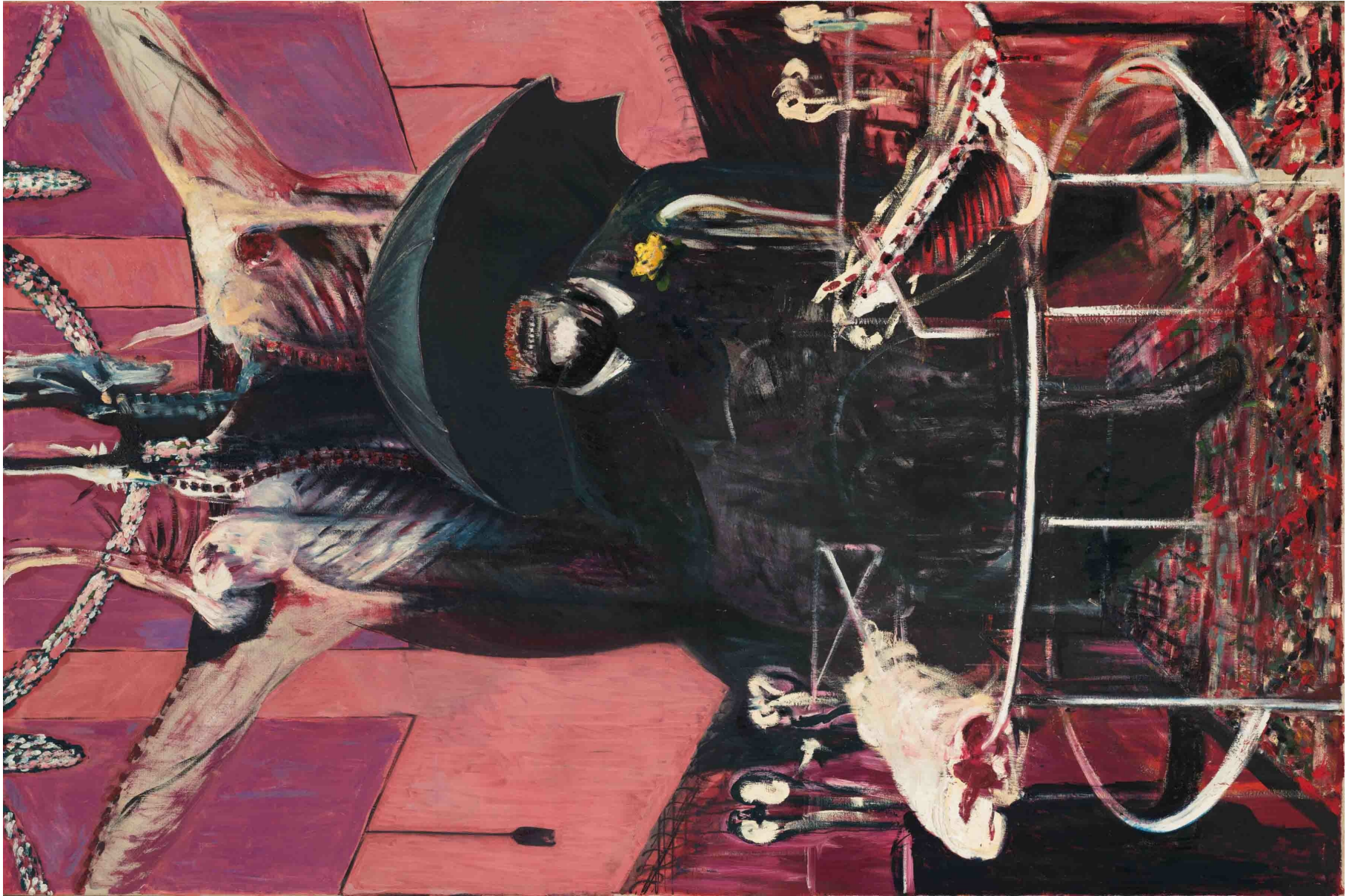
[60] *Triptych*, 1970. Oil on canvas, each panel 198 x 147.5 cm. National Gallery of Australia, Canberra. [Plate 1 in the 2002 French edition.]

[61] *Triptych, Studies from the Human Body*, 1970. Oil on canvas, each panel 198 x 147.5 cm. Jacques Hachuel Collection, New York. [Plate 2 in the 2002 French edition.]

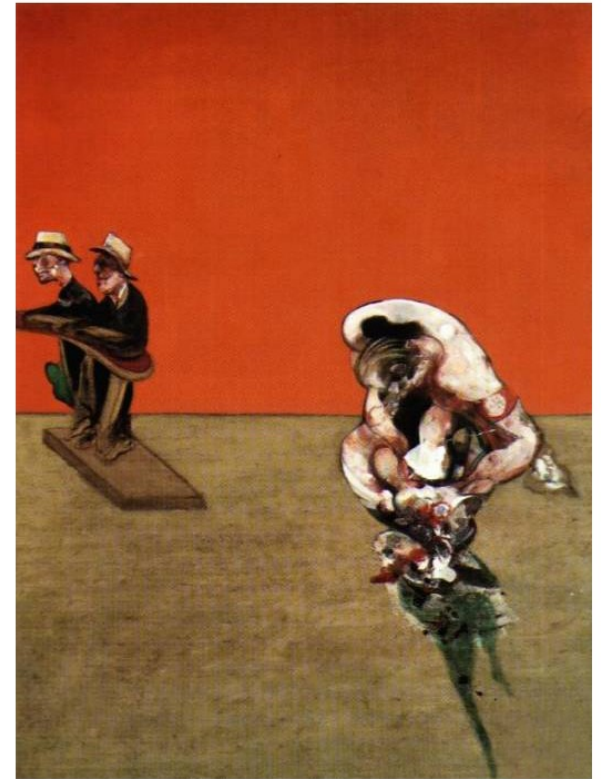
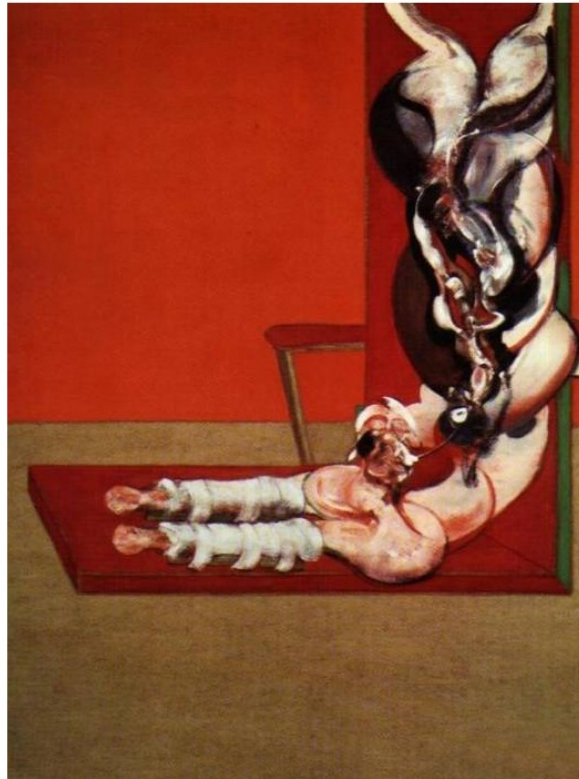
[62] *Triptych, Studies of the Human Body*, 1970. Oil on canvas, each panel 198 x 147.5 cm. Marlborough International Fine Art. [Plate 3 in the 2002 French edition.]

[73] *Triptych*, May-June 1973. Oil on canvas, each panel 198 x 147.5 cm. Saul Sternberg Collection, New York. [Plate 6 in the 2002 French edition.]

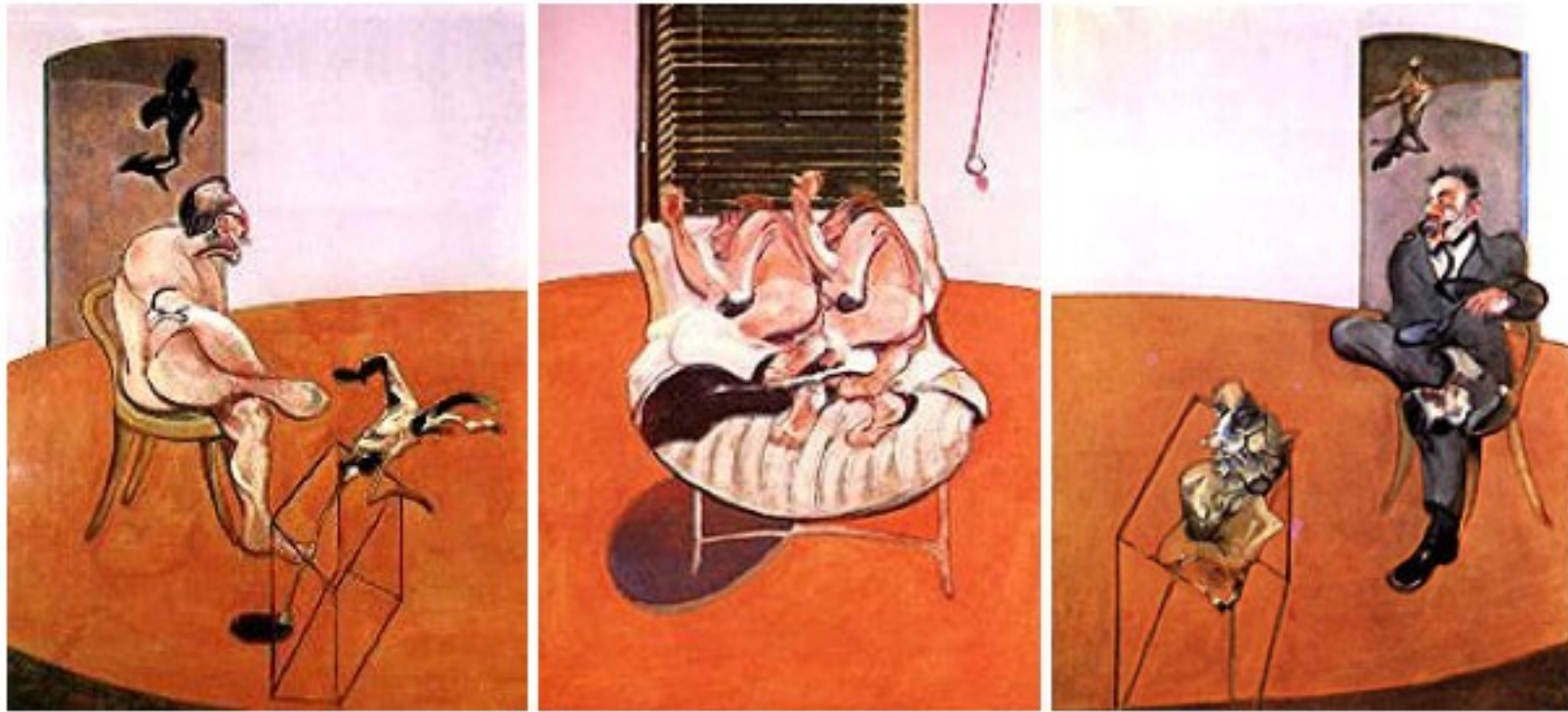
[3] *Painting*, 1946. Oil and tempera on canvas, each panel 198 x 132 cm. Museum of Modern Art, New York.



[35] *Triptych, Crucifixion*, 1965. Oil on canvas, each panel 198 x 147.5 cm. Staatsgalerie Moderner Kunst, Munich.

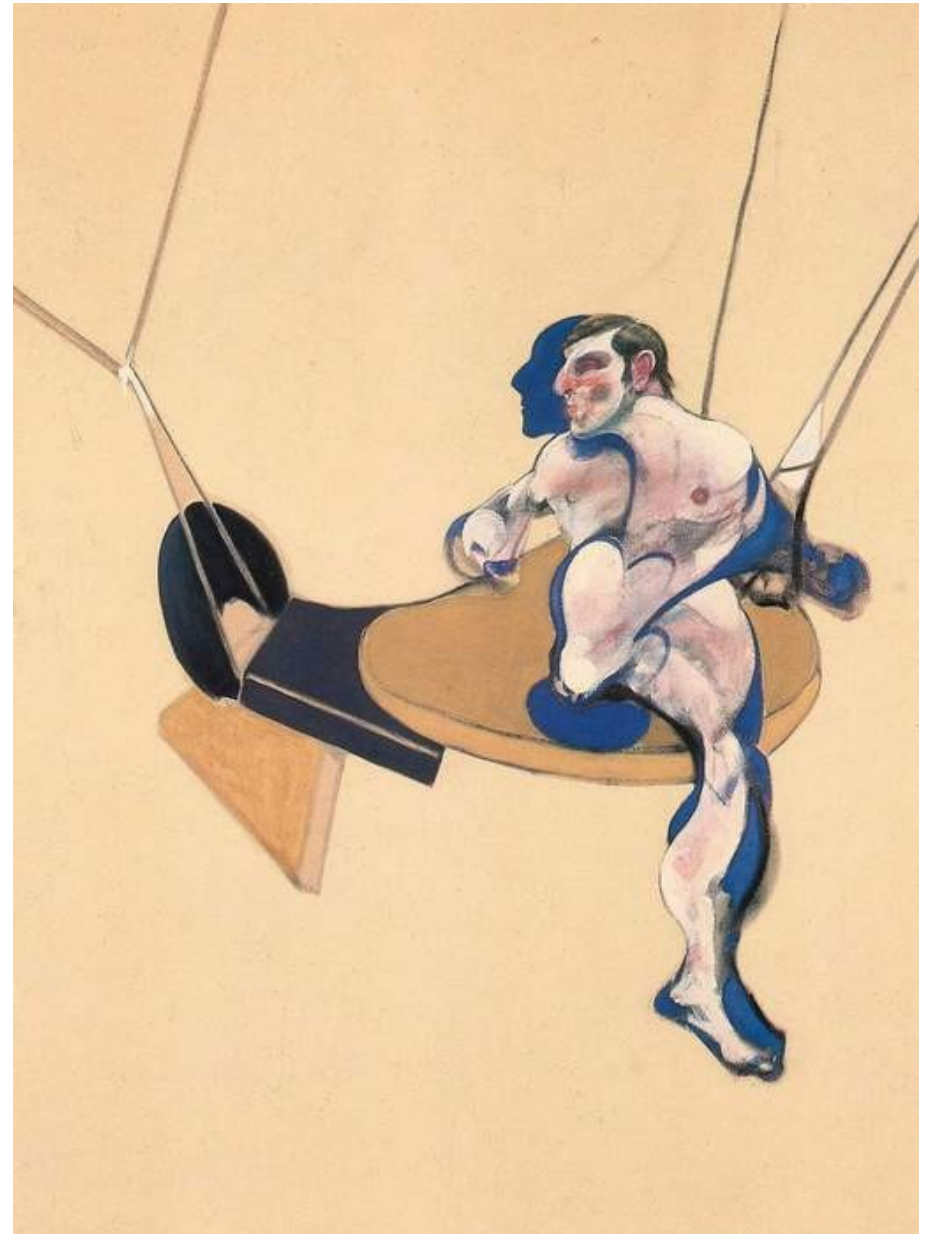


[53] *Triptych, Two Figures Lying on a Bed with Attendants*, 1968. Oil on canvas, each panel 198 x 147.5 cm. Private collection, New York.

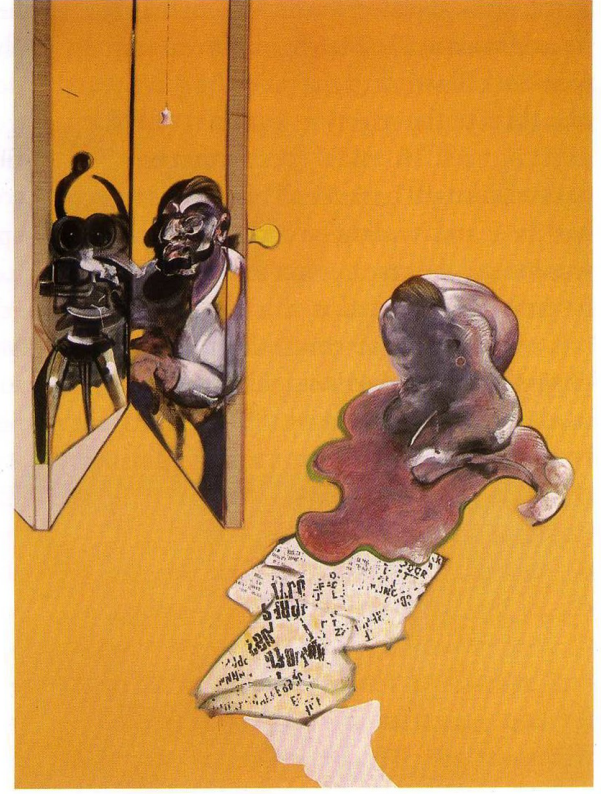
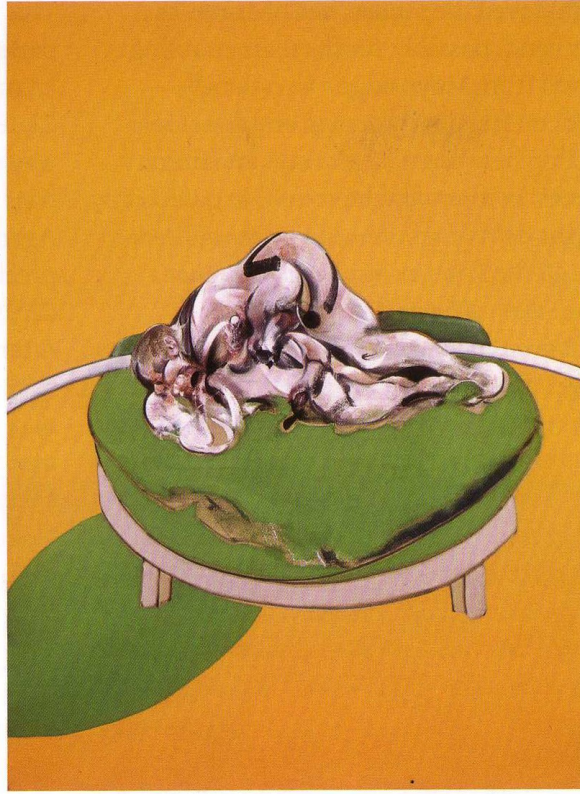


[60] *Triptych*, 1970. Oil on canvas, each panel 198 x 147.5 cm. National Gallery of Australia, Canberra.

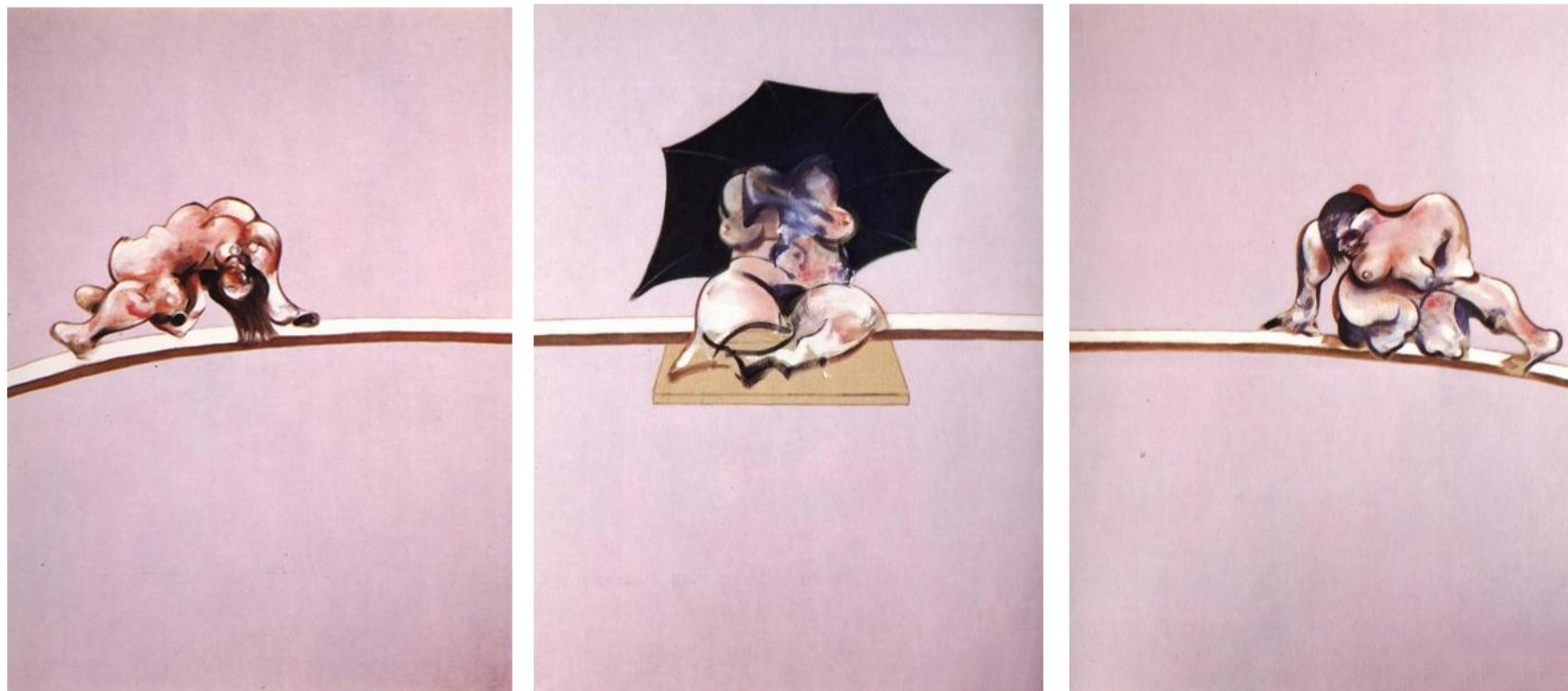
Detail



[61] *Triptych, Studies from the Human Body*, 1970. Oil on canvas, each panel 198 x 147.5 cm. Jacques Hachuel Collection, New York.



[62] *Triptych, Studies of the Human Body*, 1970. Oil on canvas, each panel 198 x 147.5 cm. Marlborough International Fine Art.



[73] *Triptych*, May-June 1973. Oil on canvas, each panel 198 x 147.5 cm. Saul Sternberg Collection, New York.

